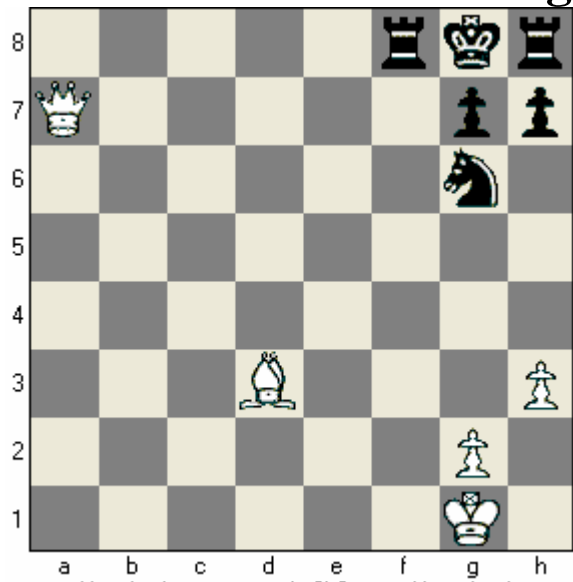
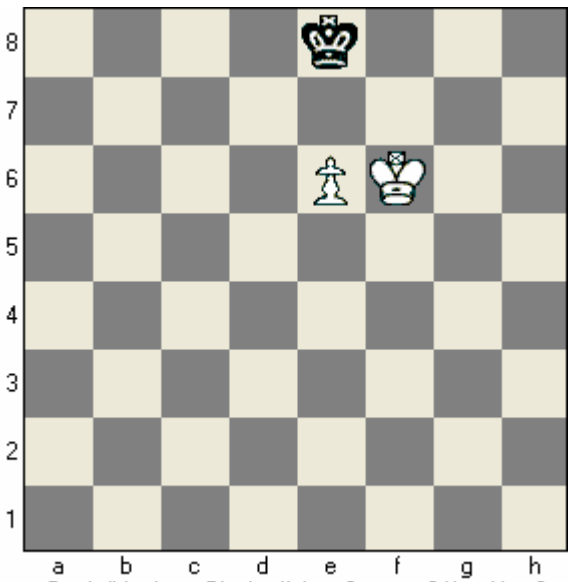


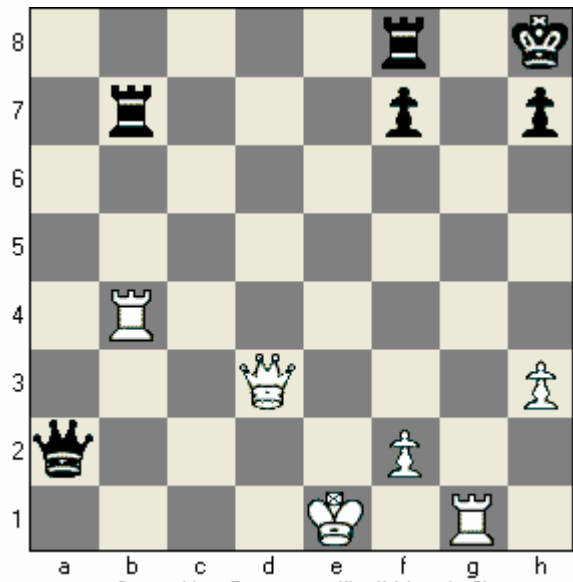
## Using the Force!



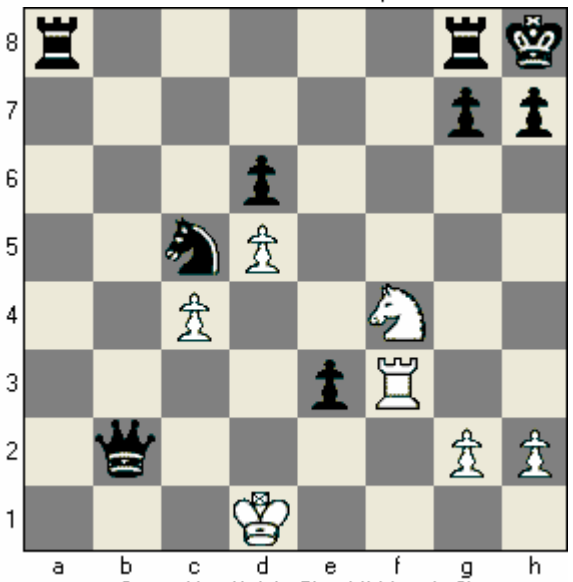
Use the force to mate in 2! Starts with a check.



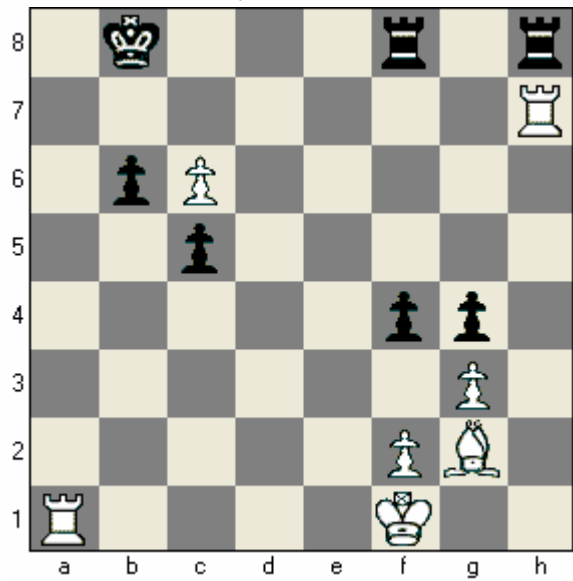
Can White force Black off the e8 square? If so How?



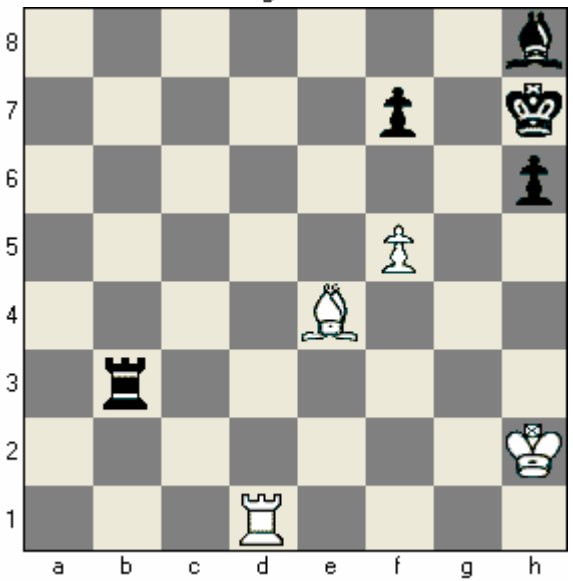
Start with a Queen sacrifice!! Mate in 2!



Start with a Knight Check!! Mate in 2!



White's pawn forces a mate in 2! Can you find it?



White's pawn forces a mate in 2!! Can you find it?