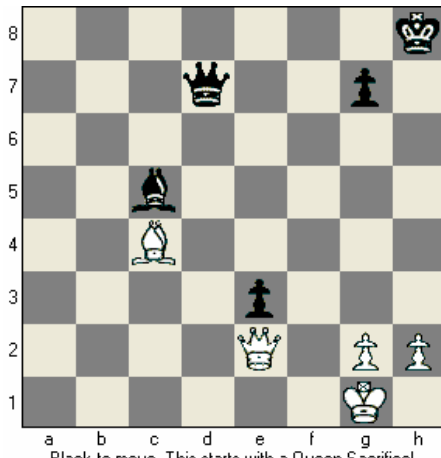


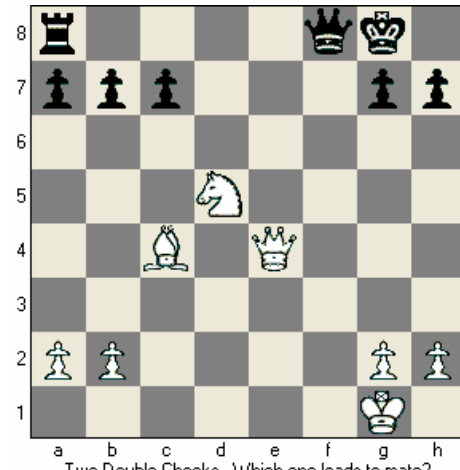
Name _____

Discovered Check!

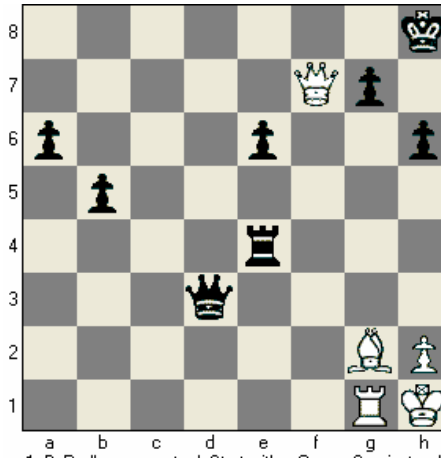
Advanced



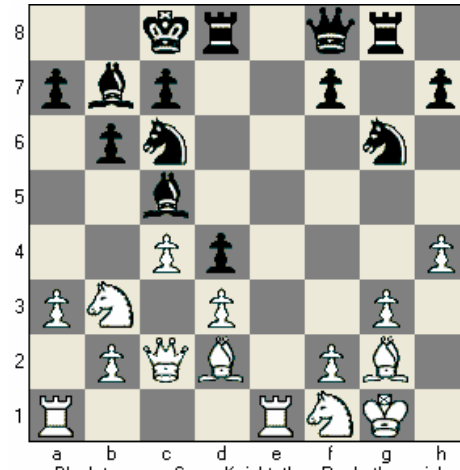
Black to move. This starts with a Queen Sacrifice!



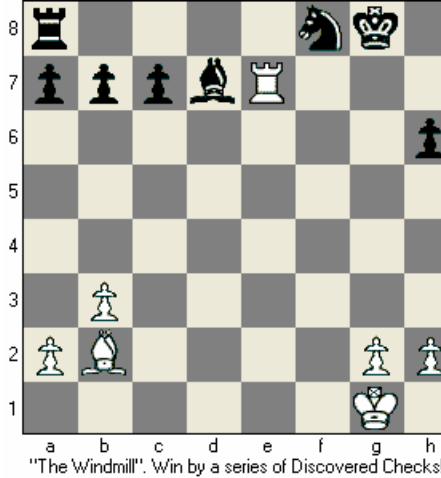
Two Double Checks...Which one leads to mate?



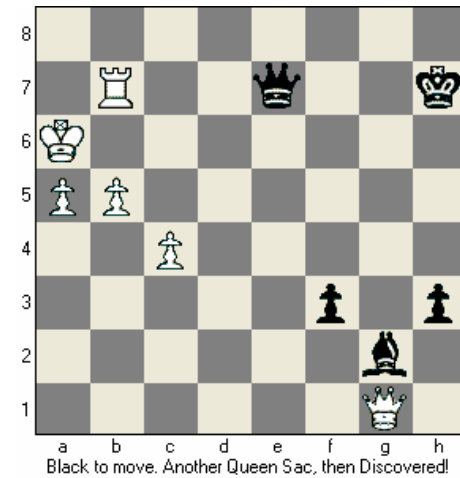
1. BxR allows perpetual. Start with a Queen Sac instead!



Black to move. Sac a Knight, then Rook, then win!



"The Windmill". Win by a series of Discovered Checks!



Black to move. Another Queen Sac, then Discovered!