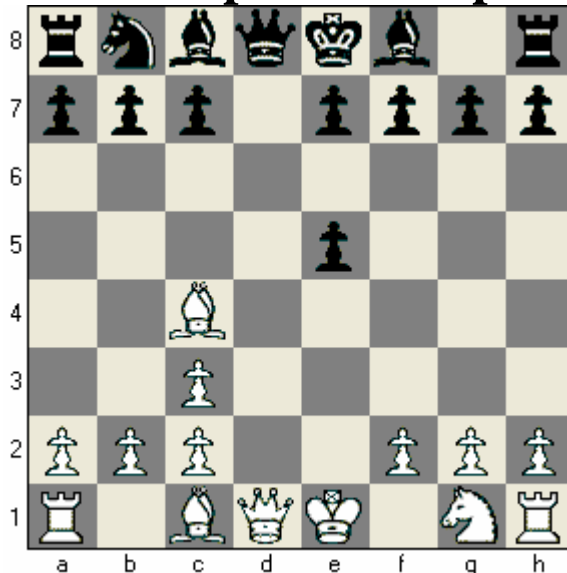
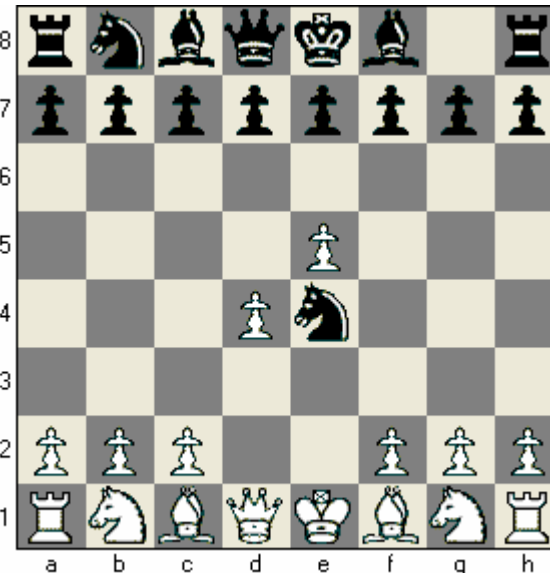


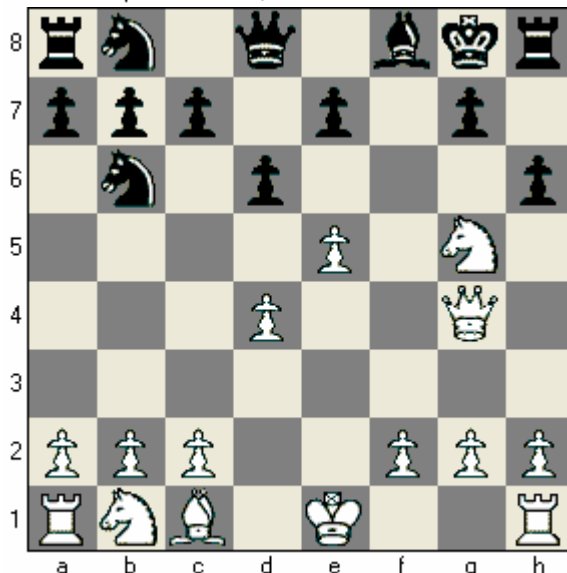
Zaps and Traps from Alekhine's Defense



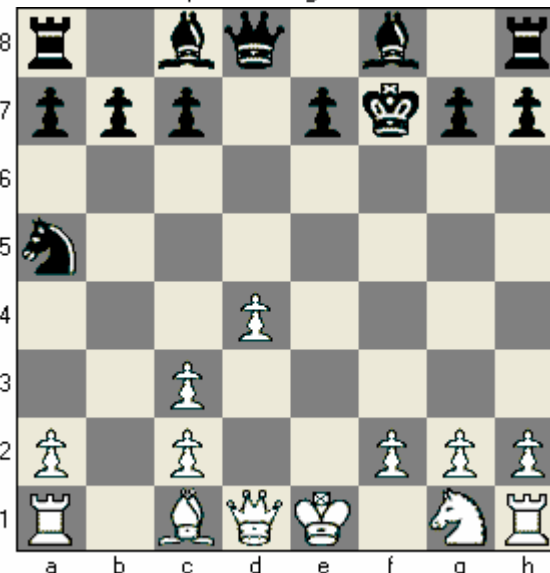
White captures a Pawn, check! What does White win?



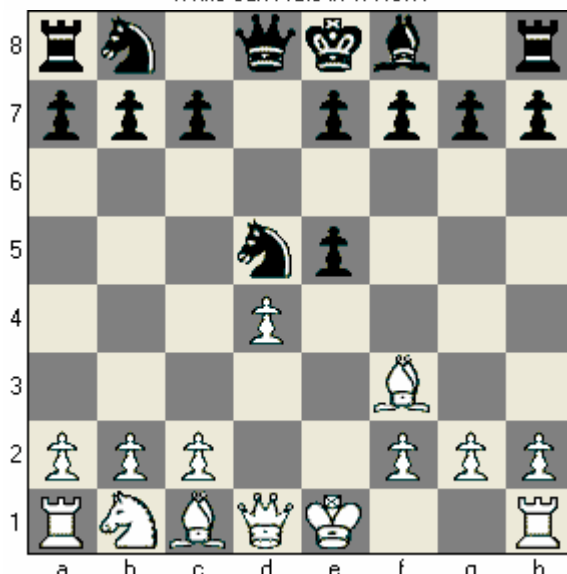
Can White Trap Black's Knight with a Pawn Push?



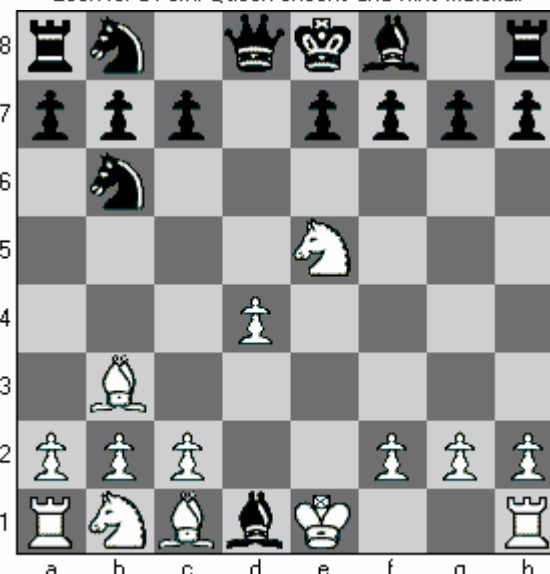
White can Mate in 1. How?



Look for a Fork! Queen checks and wins material!



How does White Re-Attack the Pinned Knight.



White Sacrificed her Queen for Mate! Can you find it?