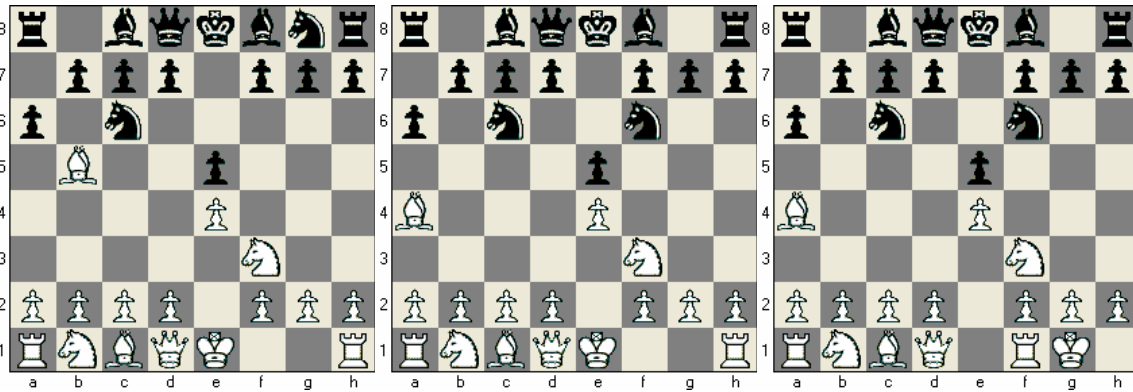


Name _____

The Ruy Lopez “Know Chess! Special”

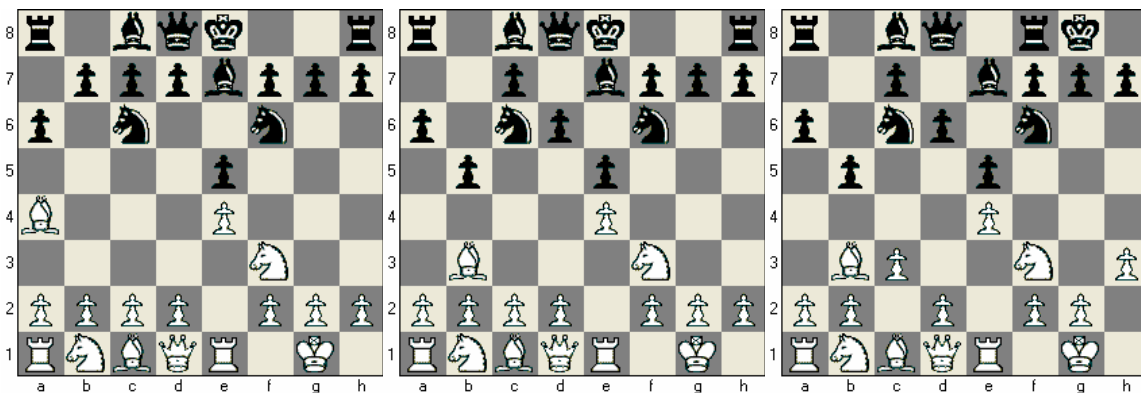
The Ruy Lopez, well known for its long-lasting positional pressure and slow but sure buildup of a Kingside attack, is the favored opening of Know-Chess! instructors. Let’s take a look at the main line of this opening from White’s perspective.



Play begins **1. e4 e5 2. Nf3 Nc6 3. Bb5** (The Ruy Lopez) **a6.**

White retreats his Bishop with **4. Ba4.** Black responds **4. ...Nf6.**

White plays **5. O-O,** momentarily leaving his e4-Pawn in the lurch.



Black has two choices on move 5: he can play either **5. ...Nxe4**, going into the open defense, or the main line move, **5. ...Be7**. Black plays this move for several reasons: 1) it _____ (**develops** or **hides**) the Bishop; 2) it prepares for castling; and 3) it _____ (**blocks** or **opens**) the e-file, which may become an important avenue of attack. **6. Re1.** Now that White’s King Pawn is protected, he threatens to win Black’s King Pawn by 7. _____ (which removes the defender) followed by 8. Nxe5.

Black chases the White Bishop again with **6. ...b5**, eliminating the threat just discussed. White retreats with **7. Bd3**, and Black protects his e5-Pawn again with **7. ...d6**. Black has survived the first wave of White threats, but White has not yet begun to fight! White’s main plans now are to overtake the _____ (**center** or **side**) with d4, and build up an _____ (**attack** or **Defense**) on the Kingside by a general moving of his pieces to that side of the board.

White prepares to occupy the center by first playing **8. c3**, which also has the merit of allowing the Bishop to move to c2 in case it is attacked by an enemy Knight. Black gets his King into safety – for the time being at least – with **8. ...O-O**. At first glance, it would seem that White could immediately play **9. d4** and grab the center. In this position, however, that move would be too hasty, because Black would use this time to create an annoying _____ (**pin** or **skewer**) with **9. ...Bg4!** So White plays **9. h3!** To prevent this.

There it is: The Know Chess! Special