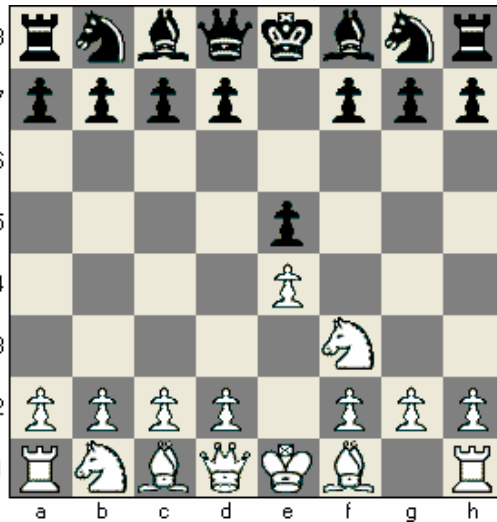


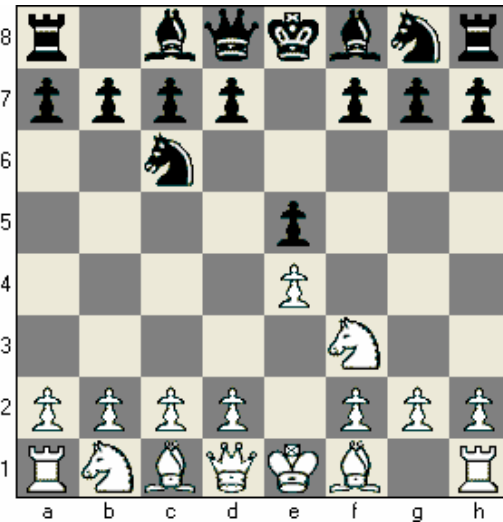
Name _____

The Ruy Lopez: Introduction

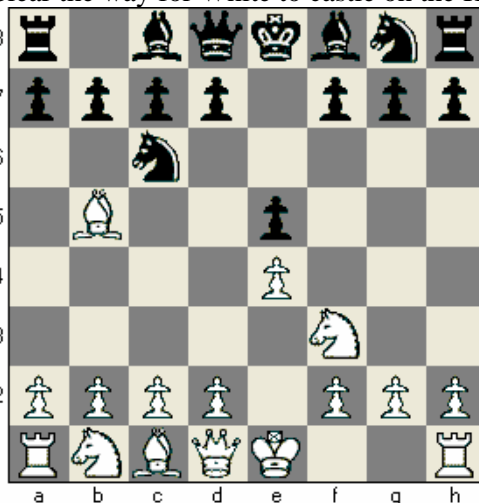
Perhaps the strongest system for White that begins with 1. e4 e5 is the **Ruy Lopez**. This opening was named for a Spanish Bishop (the religious kind – not the chess kind!) who analyzed it several hundred years ago. In this lesson you will learn the basic strategic concept that White uses in this opening.



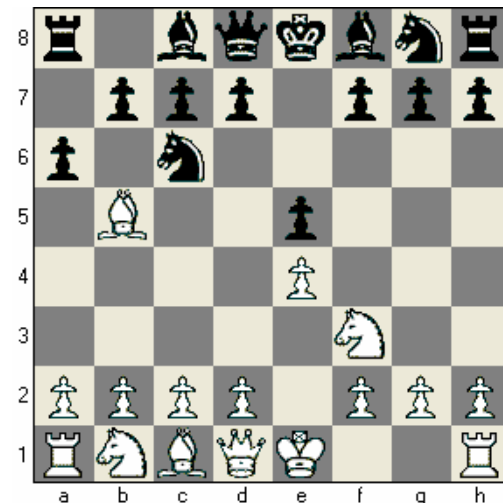
The game begins 1. e4 e5 2. Nf3. White's second move is very good because (1) it _____ (develops or moves) a piece; (2) it attacks the Black e5 – Pawn; (3) it controls the center; and (4) it helps clear the way for White to castle on the Kingside.



Black replies 2. ...Nc6. This is also a good move because (1) it develops a piece; (2) it _____ (controls or ignores) the center; and (3) it _____ (attacks or protects) the e5 Pawn.



White plays 3. Bb5, the move which gives us the Ruy Lopez. White's big plan in this opening is to _____ (attack or ignore) the Knight which defends the Pawn on e5.



Already Black has to start worrying about Bxc6. If Black loses his Knight, nothing will be defending _____ (c5 or e5). So Black plays 3. ...a6. What are White's choices now? _____ and _____.