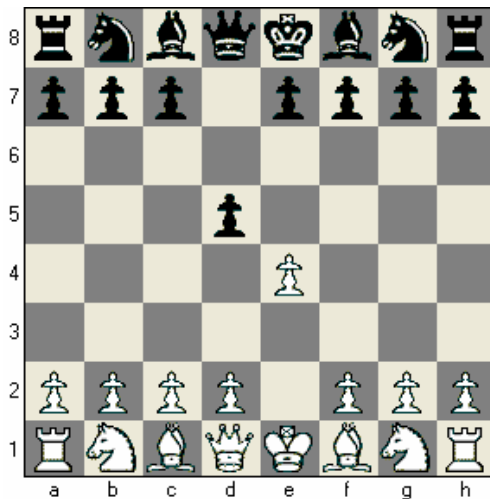


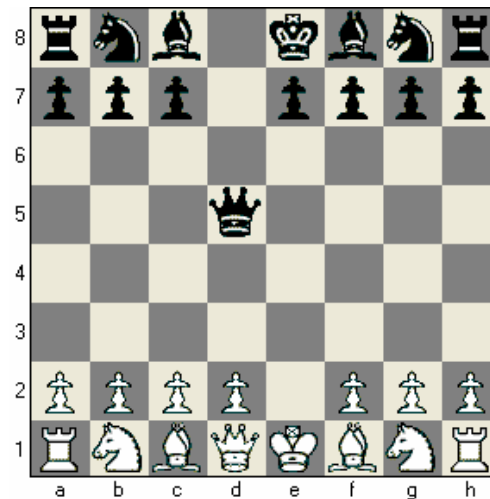
Name _____

The Center Counter Defense

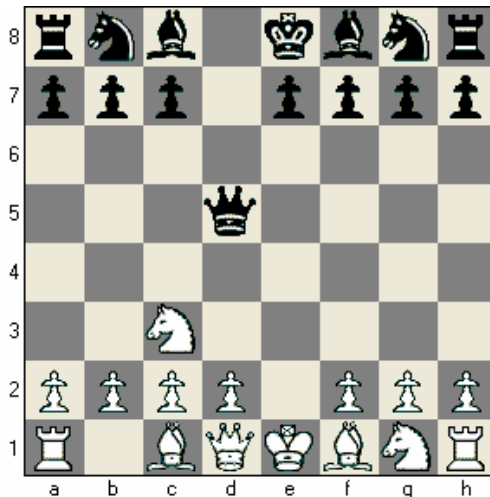
In the Center Counter Defense, Black fights for control of the center from the very first move. While this is a good idea in itself, the problem is that in exchange for control of the center, Black must bring out her Queen early in the game, exposing it to attack by the White pieces. As a result, **the Center Counter Defense is not recommended for Black**. Let's see why.



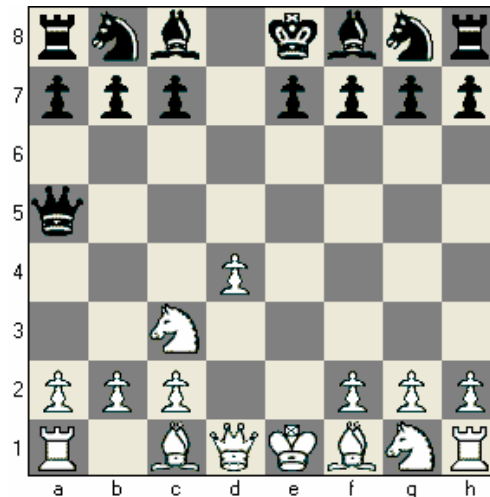
The game begins **1. e4 d5**. Black has challenged White's control of the center directly and forces her opponent to make a decision immediately.



White plays **2. exd5** capturing Black's pawn, and Black replies with **2. ...Qxd5** to recapture. Both sides have open lines, but Black's Queen is a target.



White takes advantage of this by _____ her Knight to c3 (**3. Nc3**). Now Black's Queen is attacked and must run away, moving for the second time in the opening. As a result, White's has gained a move, also known as a _____



Black retreats her Queen with **3. ...Qa5**. White regains control of the center with **4. d4** and has the makings of a wonderful position. She has more _____: note the open lines for both of her _____. A sorry situation for Black indeed!