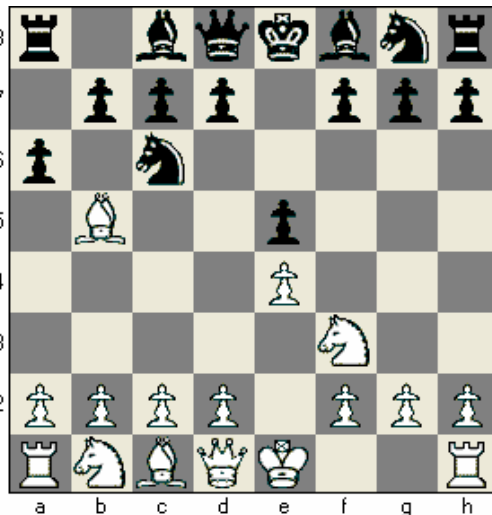


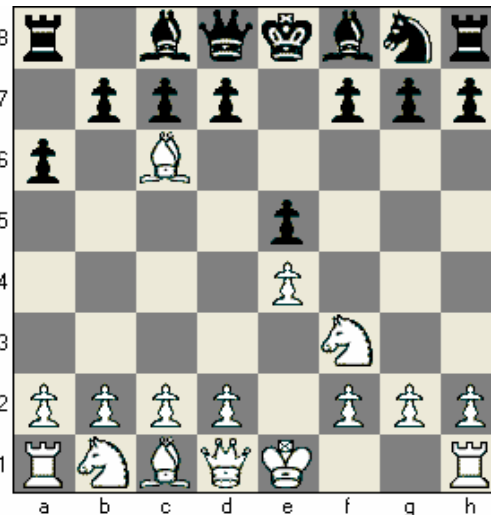
Name \_\_\_\_\_

## The Ruy Lopez: Exchange Variation

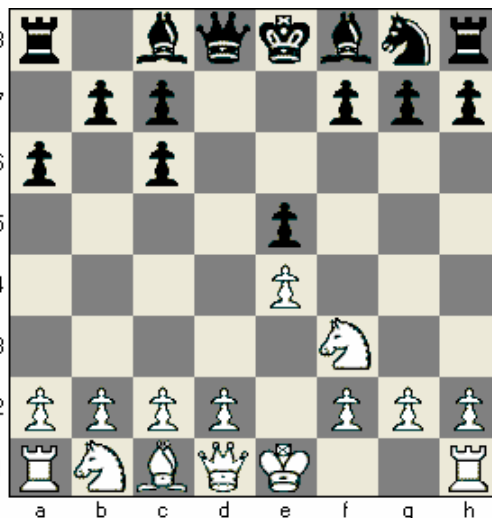
Whether you play the Ruy Lopez from the White or Black side, you must be familiar with the Exchange Variation, which is characterized by White's immediate capture of Black's c6-Knight. The resulting position holds promise – and problems – for both sides. Let us explore the concepts involved in this line.



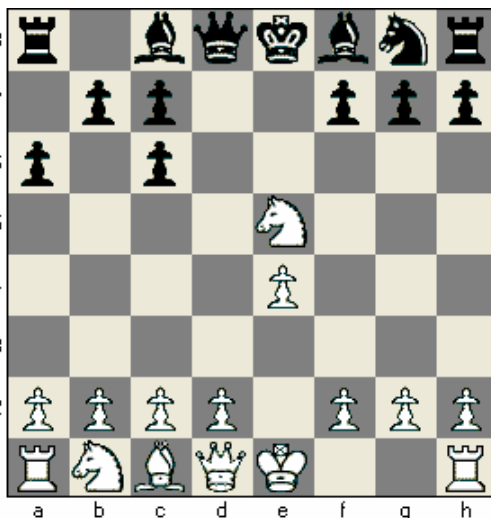
The opening begins **1. e4 e5 2. Nf3 Nc6 3. Bb5 a6**. Black has “put the question to the Bishop” as early as possible.



White responds by taking the Knight with **4. Bxc6**. Black must now capture the Bishop, but with which Pawn?



Black plays **4. ...dxc6** so that he can open up lines for his \_\_\_\_\_ and \_\_\_\_\_. Both sides have positional plusses : Black has the two Bishops in an \_\_\_\_\_ (**open** or **closed**) position, while White has the important long-term advantage of a better \_\_\_\_\_ (**Pawn** or **space**) structure.



White now plays **5. Nxe5**, thinking that he has won a pawn. This is not a strong move, however, because Black will immediately regain the Pawn and disrupt White's position with either of which two forking moves? \_\_\_\_\_ or \_\_\_\_\_. (**Hint** – Both moves are Queen moves).