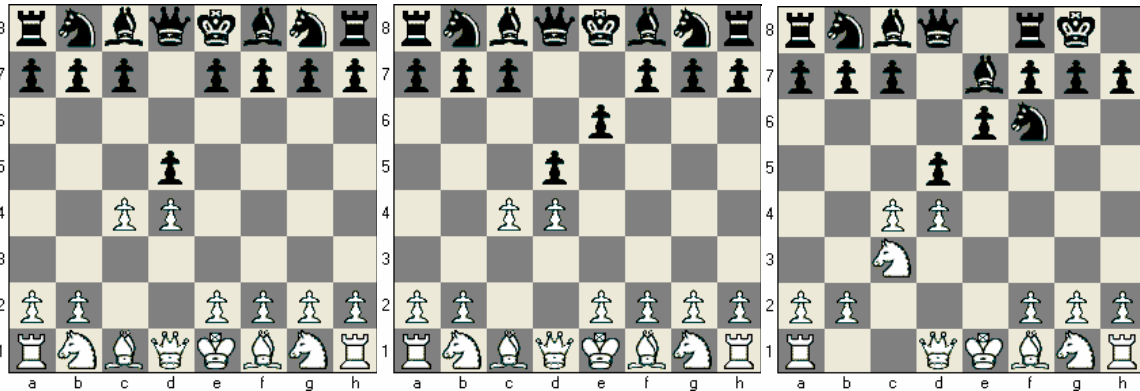


Name _____

Opening Study: Queen's Gambit Declined

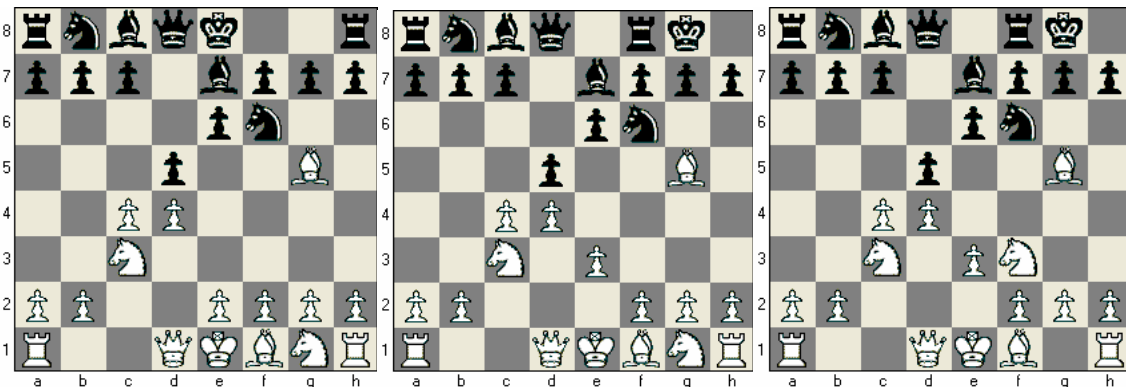
The Queen's Gambit Declined is a popular choice among modern grandmasters. White develops her pieces comfortably and can establish a long-term positional advantage if Black plays inaccurately. Black's position is solid and safe, but he can run into trouble if he does not find a way to free his Queen's Bishop. **This opening is recommended for White.** You should not play this opening as Black unless you are willing to devote extra time to studying it, as it is not easy for Black to achieve equality.



Play begins **1. d4** **2. c4**. White “gambits” the c4-Pawn knowing that if Black captures the Pawn, Black will lose his share of the center.

Black defends his d5-Pawn with **2. ...e6**. This move is good in that it maintains control of the center, but has the drawback of locking in the _____ (Bishop or Knight)

White adds more pressure to the critical d5-square by _____ (developing or center) her Knight to c3 (**3. Nc3**) Black likewise defends the d5-square with **3. ...Nf6**.



Focusing on the d5-square again, White brings out her Bishop and _____ (pins or skewers) the Knight on f6 with **4. Bg5**. Black protects his Knight with **... Be7**, allowing the Knight to keep an eye on d5.

Now that her Queen's Bishop is developed, White plays **5. e3**, preparing to activate her remaining Bishop. This move also protects the Pawn on c4 in case Black decides to capture it. Black replies with the useful move **5. ...O-O**

White brings out her King's Knight with **6. Nf3** and has a fine position due to these factors:

1. Better control of the _____ (center or space)
2. More _____ for her pieces. (center or space)
3. Black's blocked Queen's Bishop.