

Name _____

The London System!

The London System starts with 1. d4,d5 2. Nf3, e6 3. Bf4,

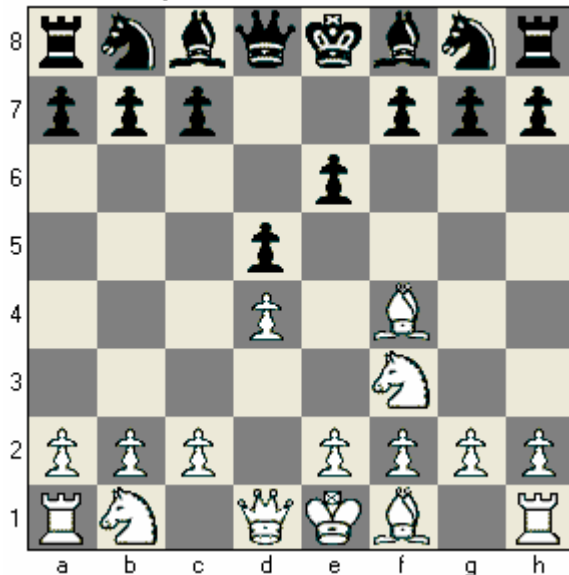


Diagram 1:

Black wants to break down Whites center. What should Black play to attack Whites center Pawn? ____ (c5, Bc5 or Nc6)

Diagram 2:

White needs the d4 Pawn to keep a strong center. Does c3 help support the center? ____ (Yes or No)

Diagram 3:

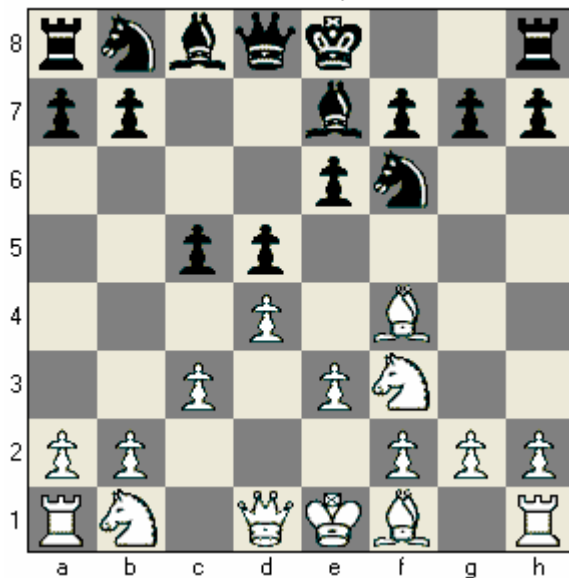
Whites Dark squared Bishop doesn't have much room to move. Black could build up to attack the Bishop. What should White play to make more room for his Dark squared Bishop? ____ (h3, e4 or g3)

Diagram 4:

If the Black Night moves to h5 to attack the bishop where should the Bishop move? ____ (Bh6, Bh2 or Bd6)

Bonus: Who has more Pieces Developed? _____ Who is ready to Castle right now? _____

4. ...Nf6 5. e3, Be7



6. h3, Nc6

