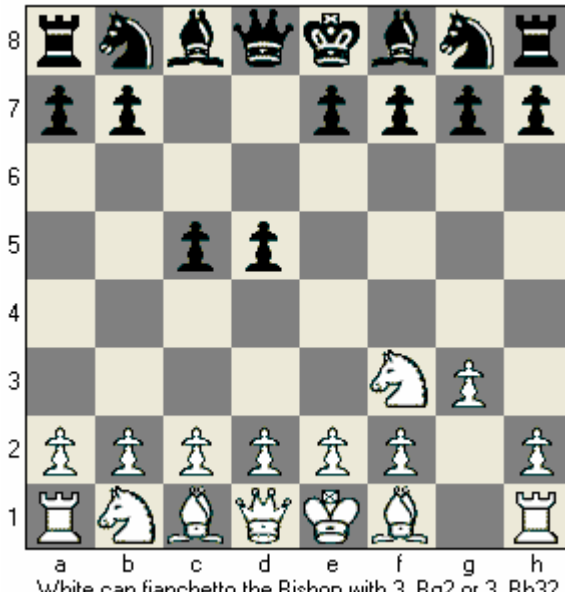


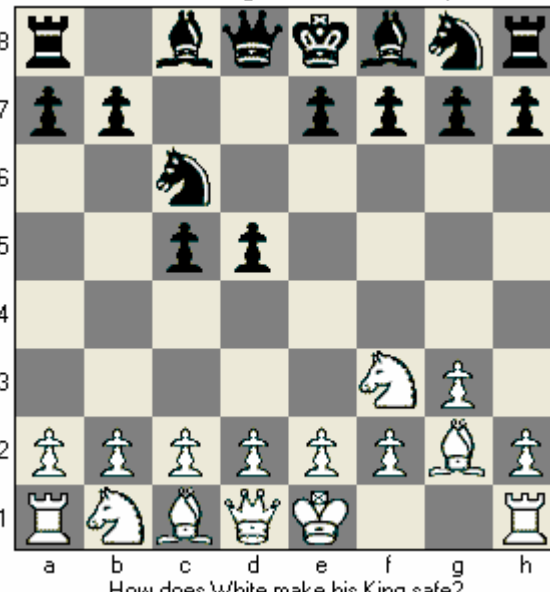
King's Indian Attack

After the moves 1.Nf3 d5 2. g3 c5 we have



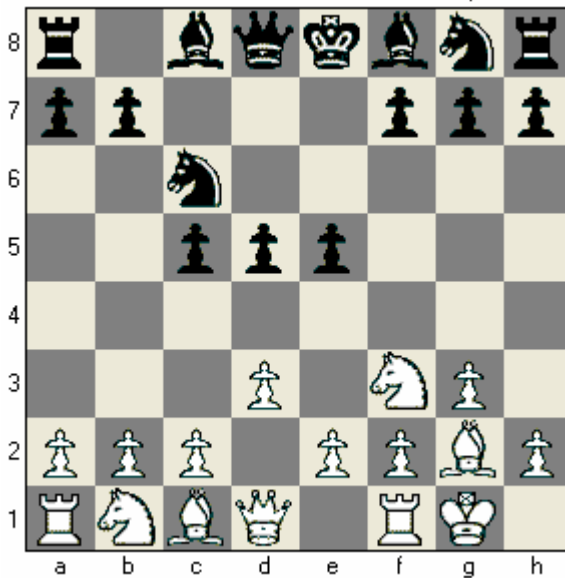
White can fianchetto the Bishop with 3. Bg2 or 3. Bh3?

After the moves 3. Bg2 Nc6 we have this position:



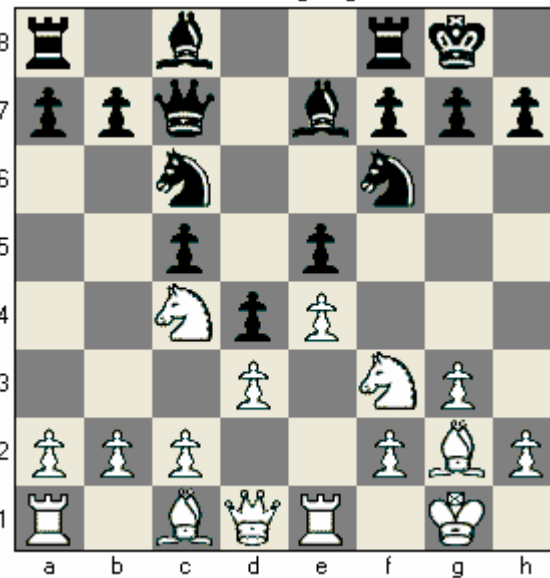
How does White make his King safe?

After the moves 4. 0-0 e5 5.d3 we have this position:



Who has the "Big Center"?

White has a strong Knight on c4!



White prevents ...b5 (kicking the Knight) with a4 or h4?

The King's Indian Attack (also called the King's Indian Reversed) starts with the moves for White 1. Nf3, 2. g3, 3. Bg2, 4. 0-0, and 5. d3.

White gets quick development and a safe King in just a few moves. Black gets a "Big Center" and more space. White is not ignoring the center though, but exerting pressure with his minor pieces (Knights and Bishops).

Which side of the board will White generally attack? _____ (Kingside or Queenside)

Which side of the board will Black generally attack? _____ (Kingside or Queenside)