

Name _____

Essential Opening Concepts

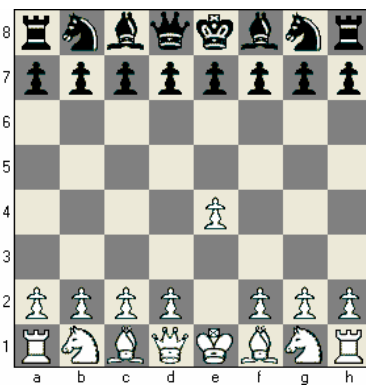
Now that you know how the pieces and Pawns move, it is time to learn what to do with them. When you play a game of chess, you must keep in mind three basic opening concepts. If you don't do these three things, chances are your position will be quite bad before the middle game even gets started (if you make it to a middle game, that is). If you do follow these rules, though, you will give yourself a good game no matter who you're playing! The three opening concepts are:

Control The Center

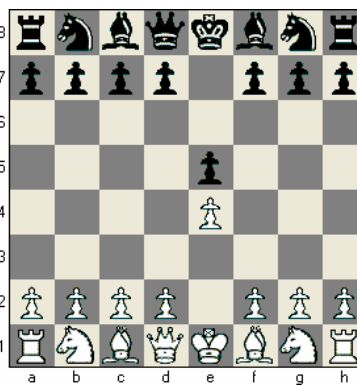
Develop Your Pieces

Keep Your King Safe

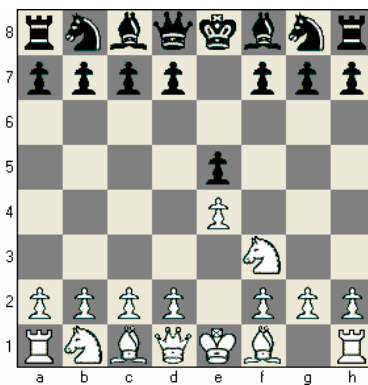
Let's go through a sample opening known as the Giuoco Piano. At the bottom of each diagram, write down what each move does, choosing from the concepts above. (If a move could have more than one possible answer, choose the most obvious answer).



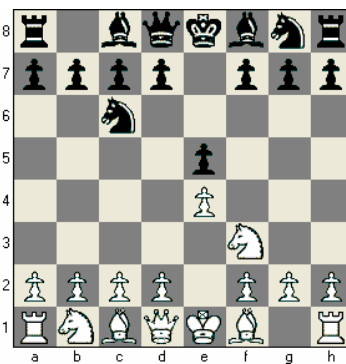
1. e4 _____



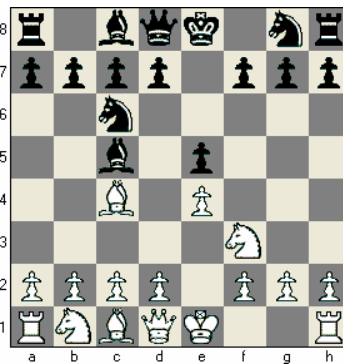
1. ...e5 _____



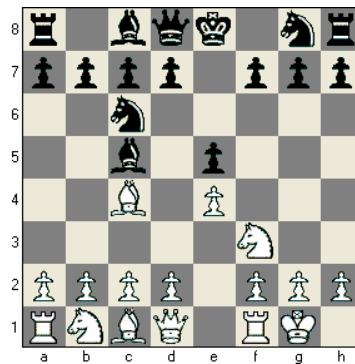
2. Nf3 _____



2. ...Nc6 _____



3. Bc4 Bc5 _____



4. O-O _____

Reminder: Pawn moves do not count as "development" because you can only develop pieces, not Pawns.