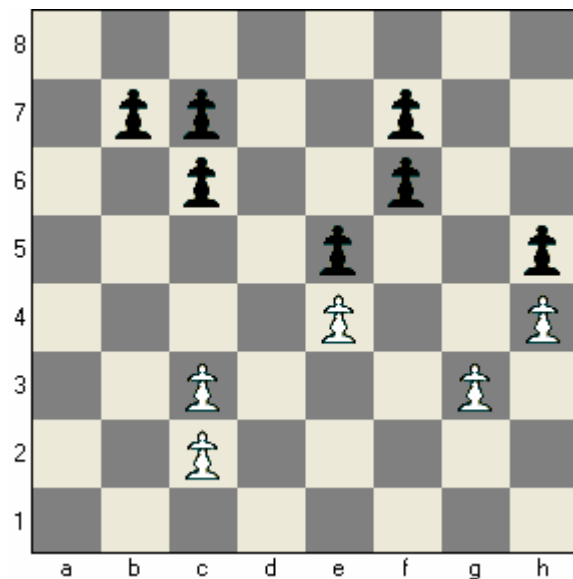
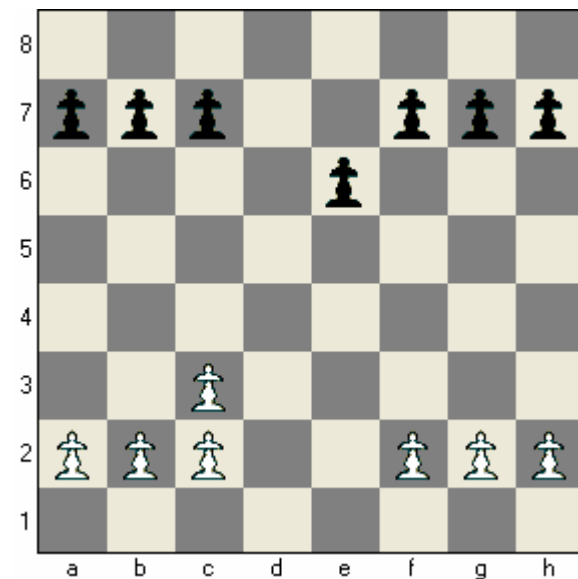
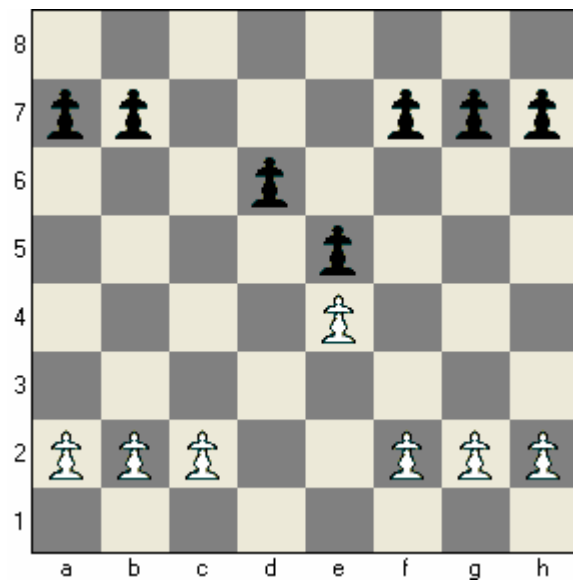
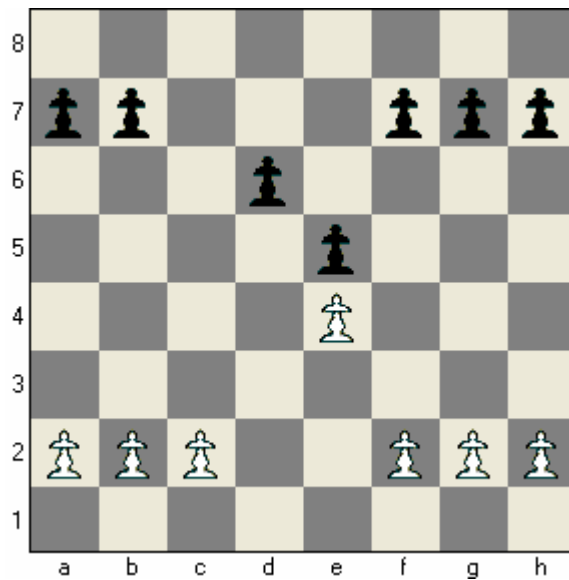


Weak Pawns



If your opponent has weak pawns.....

1. Attack them so they have to be defended by pieces.
2. Keep the game simple.
3. Trade into an ending where your opponent will have passive pieces.
4. Don't weaken your own pawns.

If you have weak pawns.....

1. Try to trade them off.
2. Complicate the game.
3. Avoid trading into an ending.
4. Weaken your opponent's pawns.