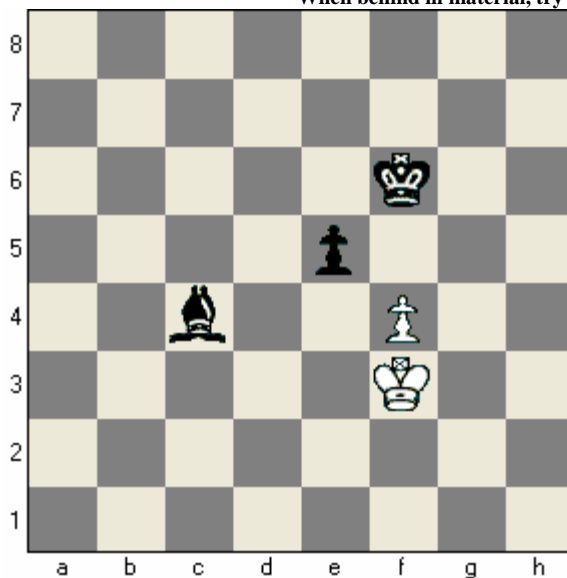
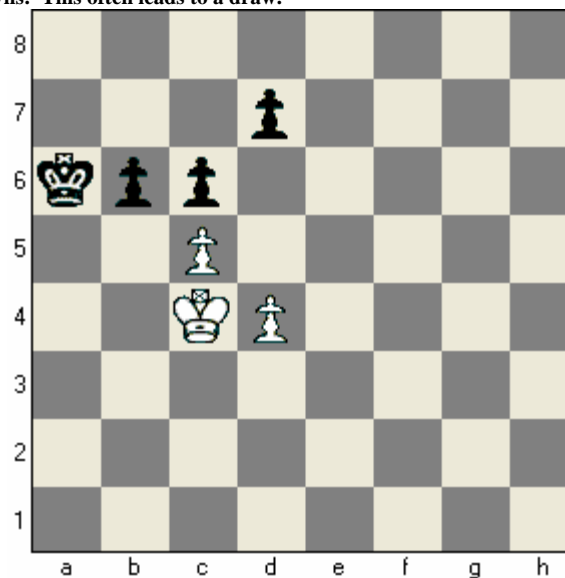


Trading Pawns when Behind!

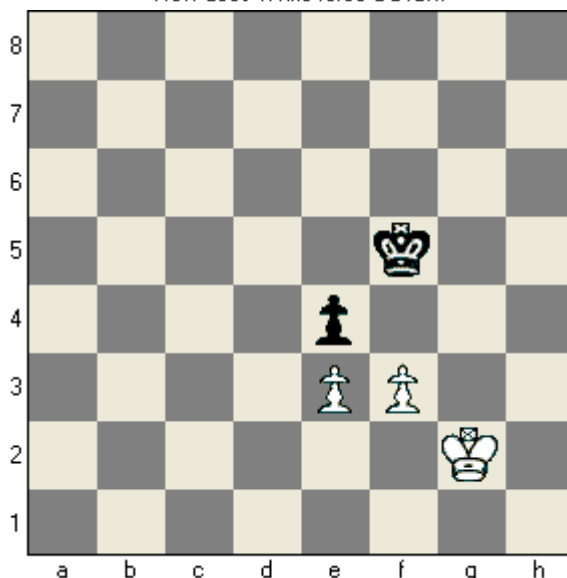
When behind in material, try trading pawns! This often leads to a draw.



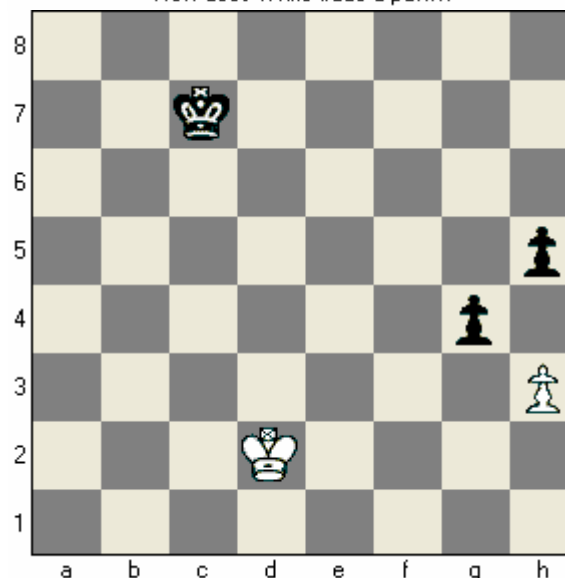
How does White force a Draw!



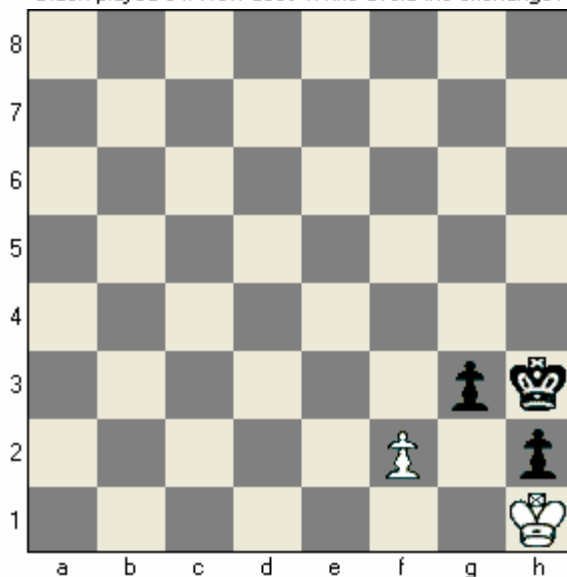
How does White trade a pawn?



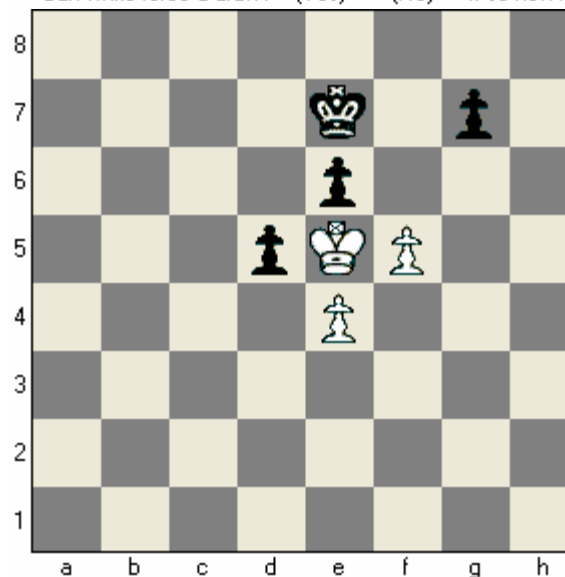
Black played e4. How does White avoid the exchange?



Can white force a draw? (Yes) (No) If so how?



Black mates with g2. How does White force a Stalemate?



Hint! Start with the "e" Pawn.