

Name _____

Three Rules of Bishops!

When you have a Bad Bishop, Fix it! Circle the answer that appropriately completes the sentence.

Rule 1:

A few ways to fix a Bad Bishop are:

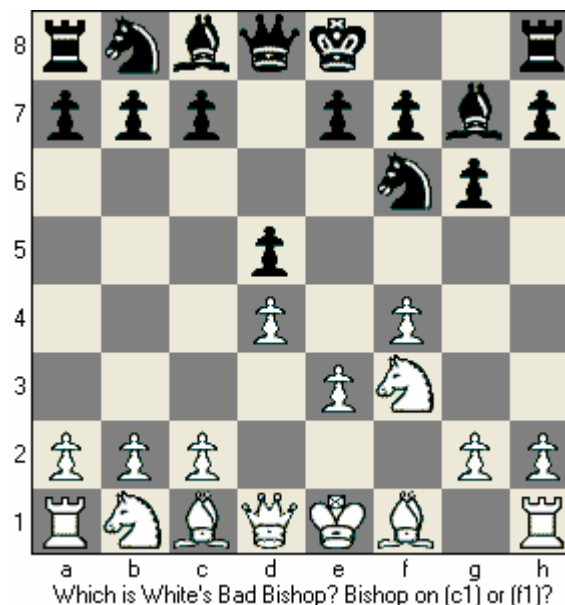
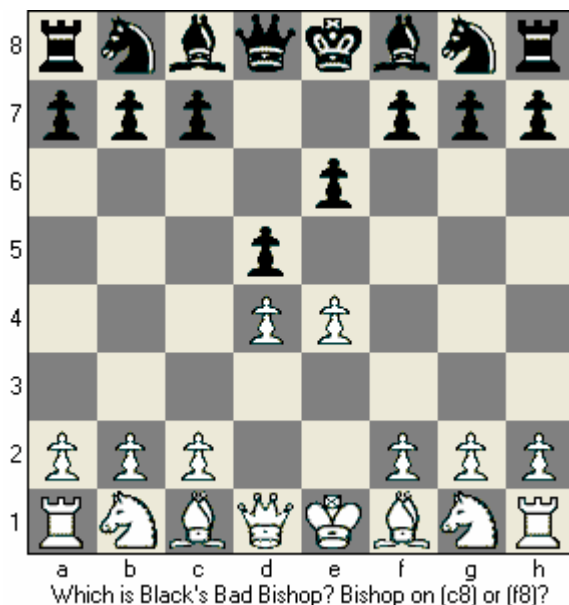
1. **(Trade or Sacrifice)** _____ it for an enemy piece of equal or greater value!
2. Make your Bishop good by getting your center Pawns _____ **(Off or On)** its color. This is usually very difficult!
3. Make it active by getting it _____ **(Inside or Outside)** the Pawn Chain.

Rule 2:

1. Bishops are usually strongest in _____ **(Open or Closed)** positions.

Rule 3:

1. Bishops are better in endgames with Pawns on _____ **(One or Both)** side(s) of the board.



The “**Bad Bishop**” has its Center Pawns on the _____ **(Same or opposite)** color as the Bishop.