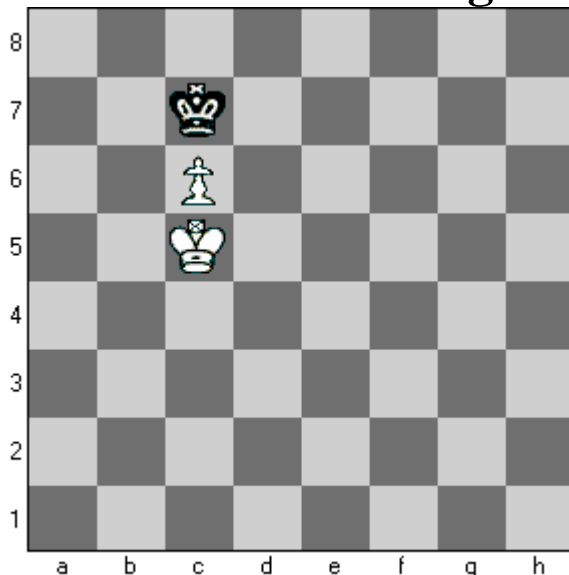
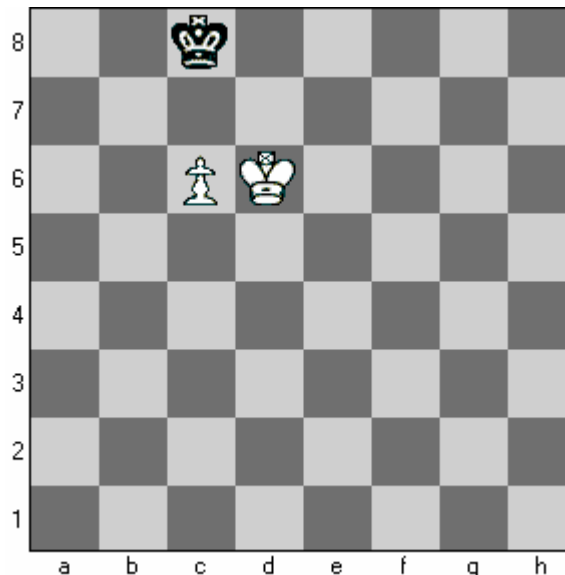


## King and Pawn Draw



Will this be a checkmate or a stalemate?



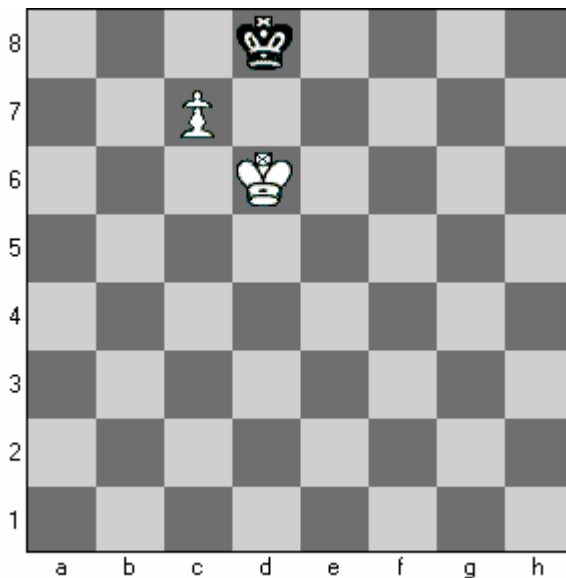
Where does Black play to put both kings in opposition?

Diagram 1:

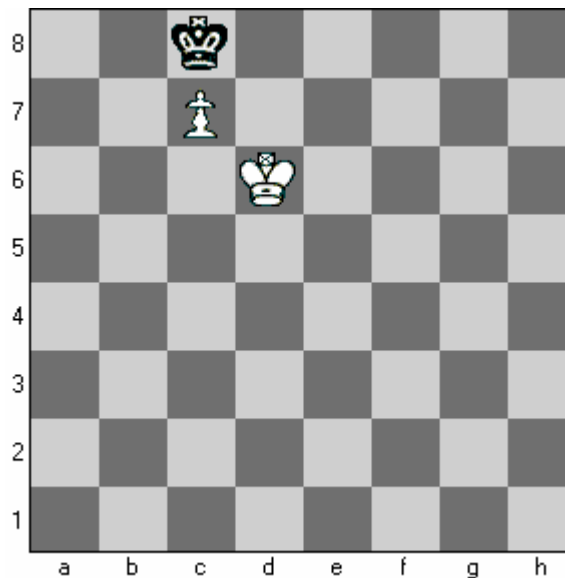
Whenever you have two Kings and a Pawn left on the board, it's easy to determine the win. If your King is in front of the Pawn while holding opposition it's a win, but if your King is behind your Pawn, it is a draw.

Diagram 2:

1. Will White be able to place his King in front of the Pawn? \_\_\_\_\_ (Yes) or (No)



How can Black force a stalemate?



Where does Whites King have to play to keep the Pawn?

Diagram 3:

Whenever you receive check on the 8<sup>th</sup> rank, you must block the Pawn from advancing to the Queening square.

Diagram 4:

1. If the White King chooses not to protect the Pawn will it still be a stalemate? \_\_\_\_ (Yes) or (No)