

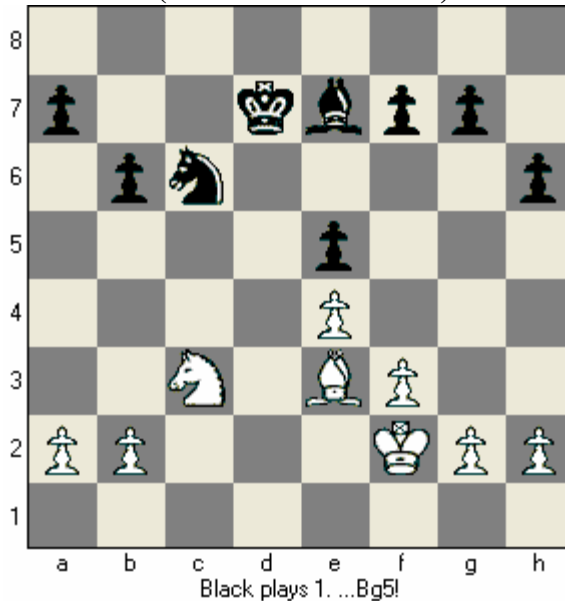
Name \_\_\_\_\_

## Four Rules of Knights!

### Rule 1

Knights need \_\_\_\_\_  
Support points to be effective?

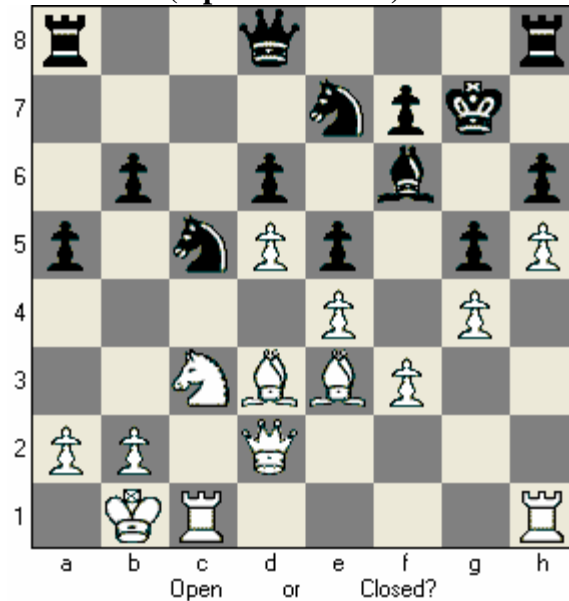
(Some or Advanced)



### Rule 2

Knights are usually strongest in \_\_\_\_\_ Positions?

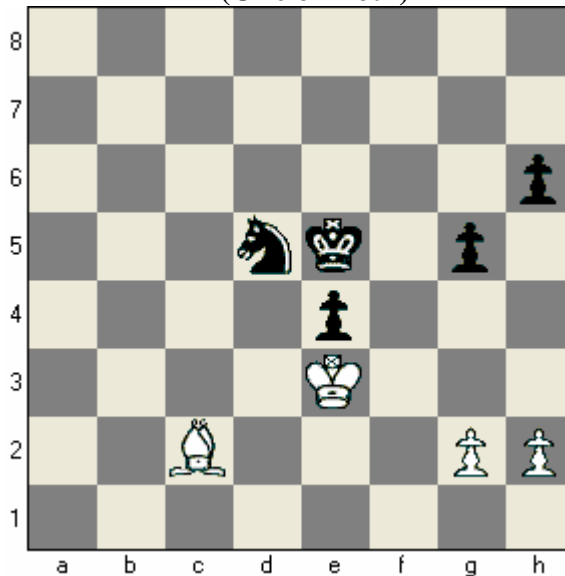
(Open or Closed)



### Rule 3

Knights are better in endgames with Pawns on \_\_\_\_\_ side(s) of the board?

(One or Both)



### Rule 4

To stop the Pass Pawn on d5. What two Knight moves will Black need to make?

(...ne8 then ...nd6 or ...ne6 then ...nd8)

