

Name \_\_\_\_\_

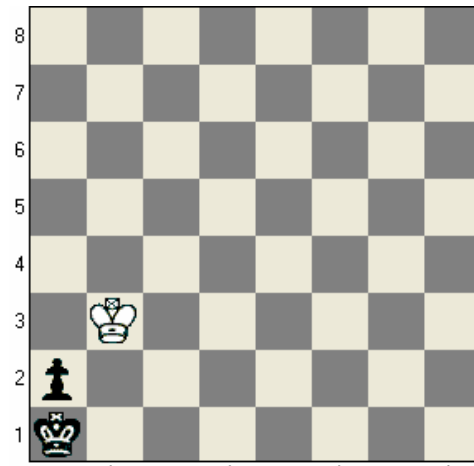
## Stalemates and Draws by Repetition

In all of these positions, White is about to lose but forces a draw by either a Stalemate or Perpetual Check!

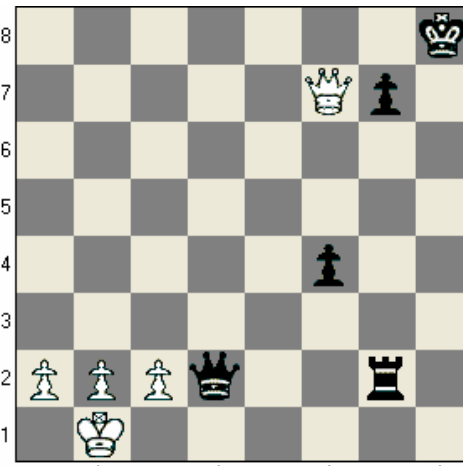
**Stalemate** – When the player whose turn it is has no legal move and is not in check. This is a draw (tie).

**Perpetual Check** – A draw caused by one side giving check with each move, resulting in Repetition.

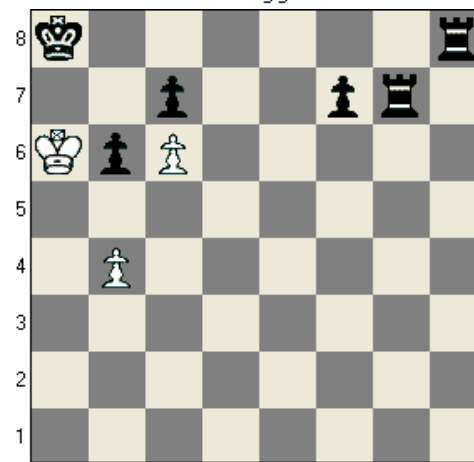
**Draw by Repetition** – Results when the same position occurs three times, with the same player to move.



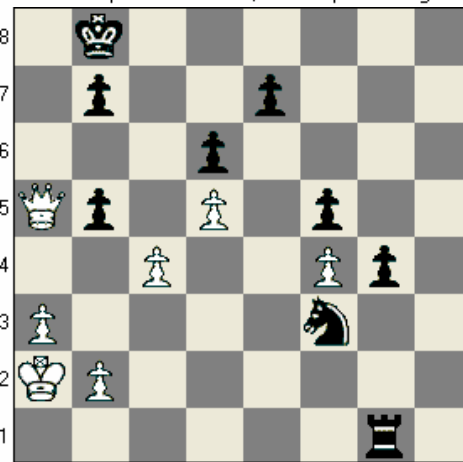
Where does the White King go to force stalemate?



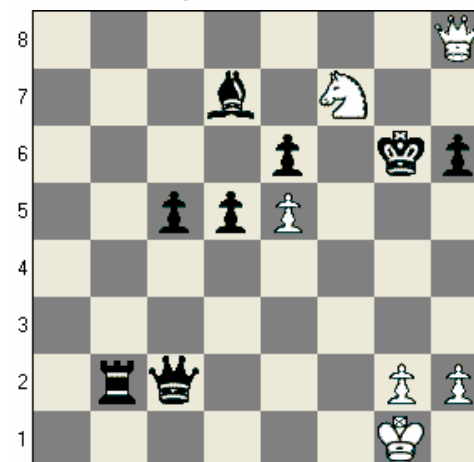
Name 2 squares the White Queen keeps checking on.



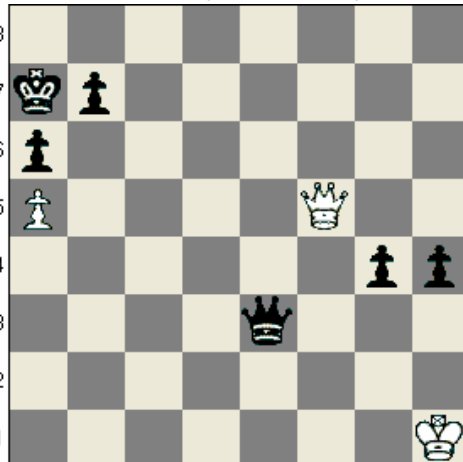
How may White force a stalemate?



White forces a repetitions! Which 2 squares?



White forces a repetitions! Which 2 squares?



White forces a stalemate by sacrificing her Queen!