

Name \_\_\_\_\_

## King and Rook Endgame

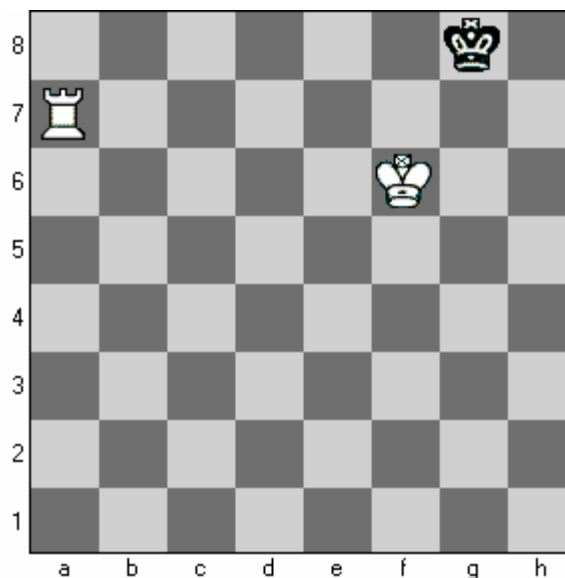
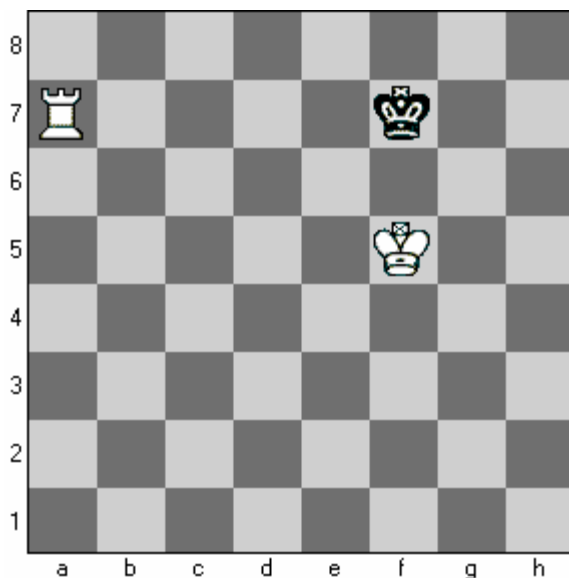


Diagram 1:

First you must have the Kings in opposition with a Rook check on the rank or file. This forces the Black King backwards up against the side of the chess board. Example Kg8.

1. After Kg8 should White place the King to take opposition, or stay one rank behind the Black King? Circle one (Kg6 takes opposition) or (Kf6 staying one rank behind)

Diagram 2:

1. If it was Whites turn would Ra8 be a checkmate? \_\_\_\_\_(Yes) (No)

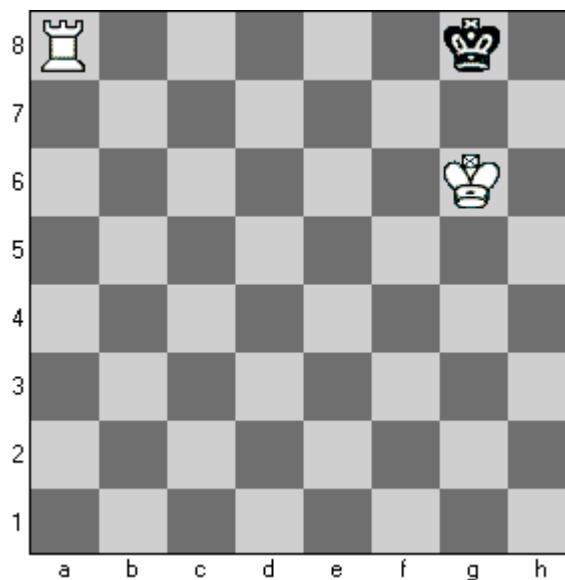
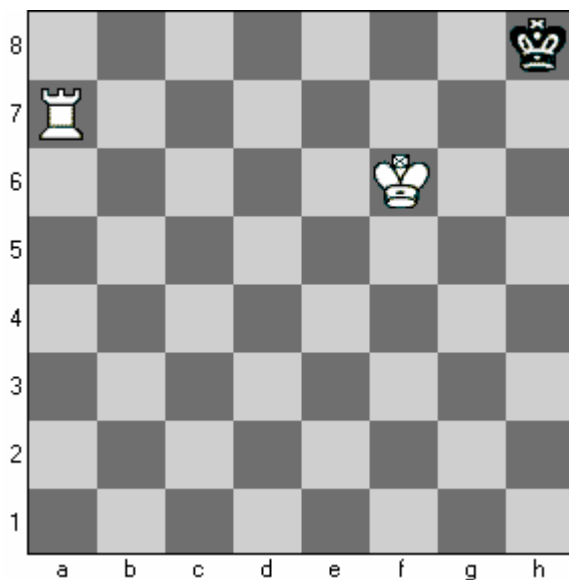


Diagram 3:

1. What Piece should White move to checkmate Black in 2 moves? (King) or (Rook)
2. What square does the piece you have chosen play to? \_\_\_\_\_

Diagram 4:

1. Are the two Kings in opposition? \_\_\_\_\_(Yes) (No)
2. What did White play to checkmate Black? \_\_\_\_\_