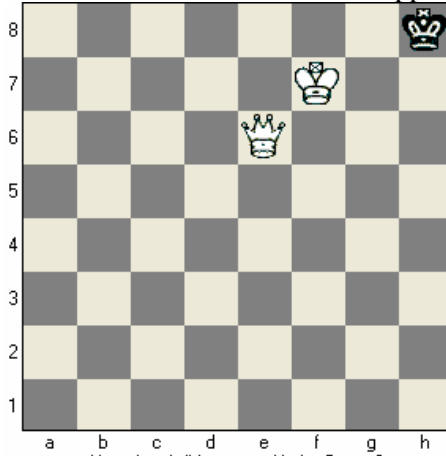


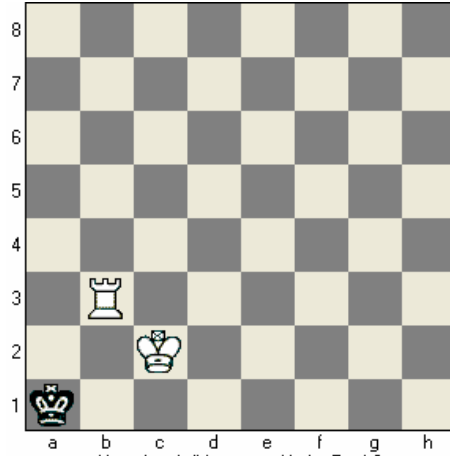
Name _____

Checkmate in One

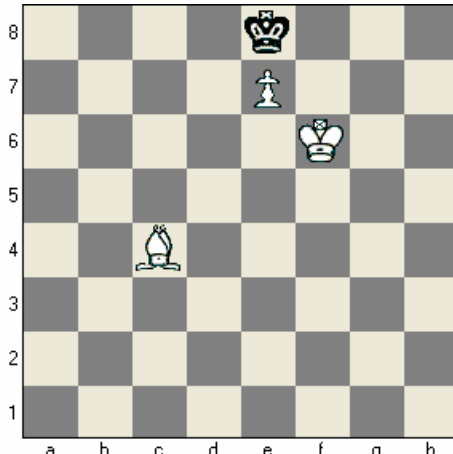
Always be on the lookout for checkmate! If you have your opponent's King on the run, look for moves that finish the game the fastest – but beware of stalemate. In each of the positions below, White checkmates Black in one move. If White isn't paying attention, however, White might stalemate Black. Don't let this happen!



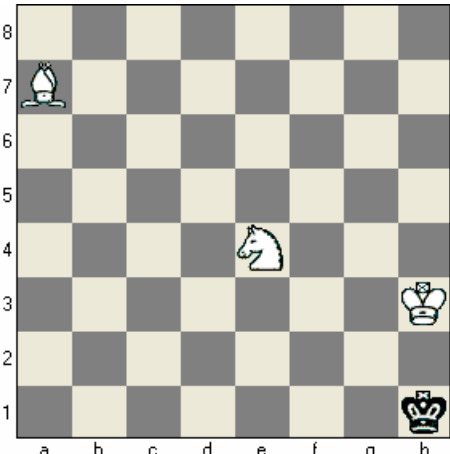
How does White mate with the Queen?



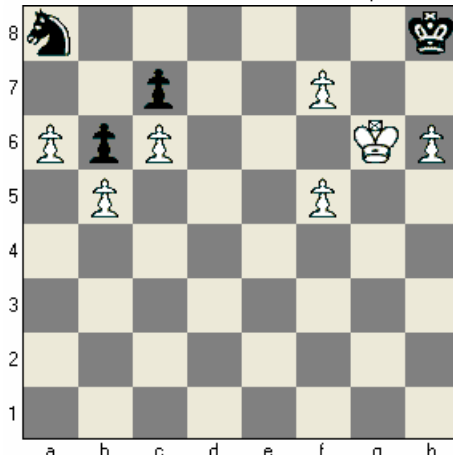
How does White mate with the Rook?



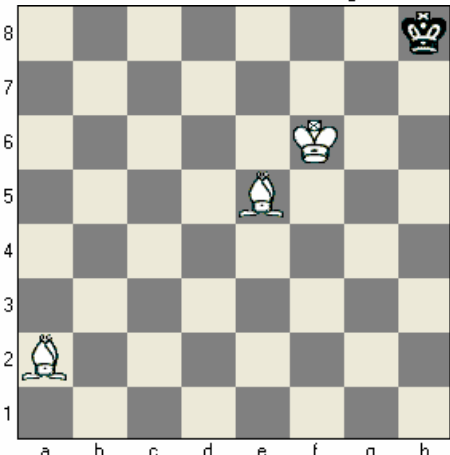
How does White mate with the Bishop?



How does White mate with the Knight?



How does White mate with the Pawn?



Find White's checkmate in one.