

Name _____

Moves and Values of the Pieces (1)

There are six different units in the game of chess, and each has its own value and movement. You must know how each piece moves before you can play a game of chess.

Write down the value for each unit below:

Pawn: _____ **Bishop:** _____ **Knight:** _____ **Rook:** _____ **Queen:** _____ **King:** _____

Every piece – except for the Pawn – captures the same way it moves. Here is a listing of how the pieces move (use this to help you with the questions below).

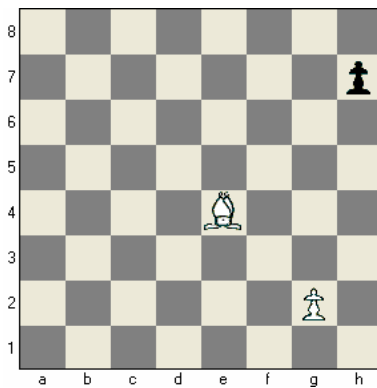
The **Bishop** always moves on a **diagonal**. A Bishop on a dark square must always stay on dark squares.

The **Rook** moves along **ranks and files**: up and down, and side to side.

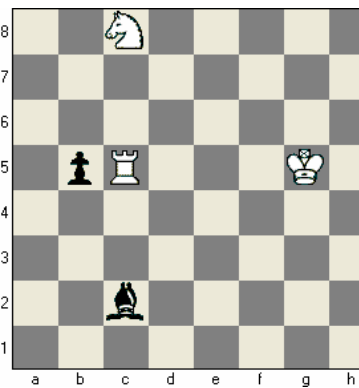
The **Queen** moves like a Rook or a Bishop. She is the strongest piece on the chessboard.

The **Knight** moves in an L-shape: 2 up and 1 over, or 2 over and 1 up.

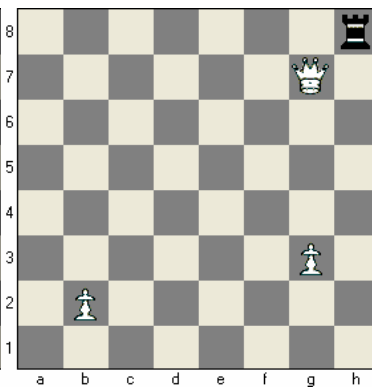
The **King** moves only 1 square at a time, but he can move in any direction.



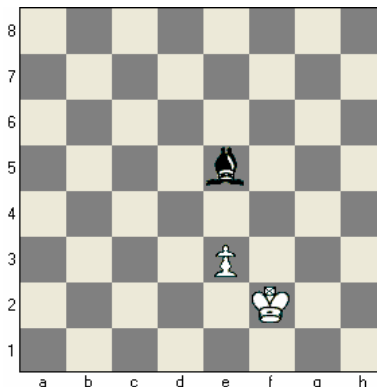
Place a **B** on each square that the Bishop can move to on this turn.



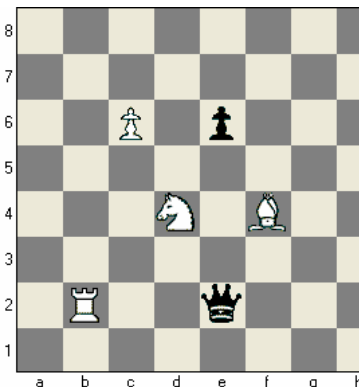
Place an **R** on each square that the Rook can move to on this turn.



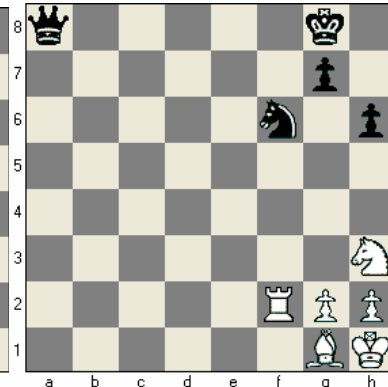
Place a **Q** on each square that the Queen can move to on this turn.



Place a **K** on each square that the King can move to on this turn.



Place an **N** on each square that the Knight can move to on this turn.



Circle the White pieces that cannot move on this turn.