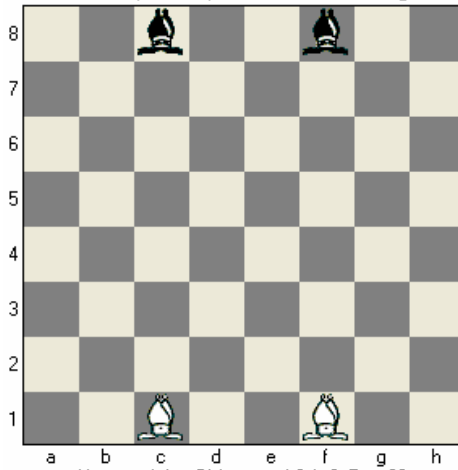


Name _____

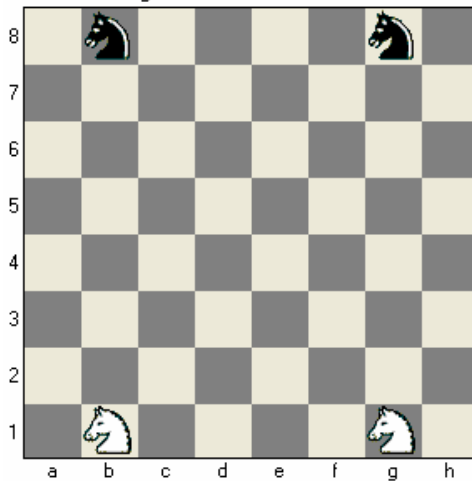
Movement and Value of Chess Pieces

Does a Bishop move up and down or on the diagonal?



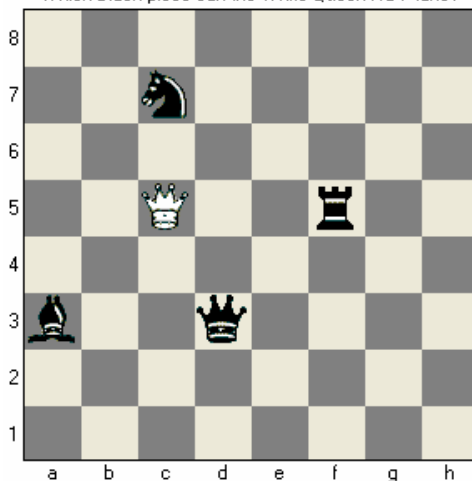
How much is a Bishop worth? 1, 3, 5, or 9?

Does a Knight move like the letter L or the letter I?



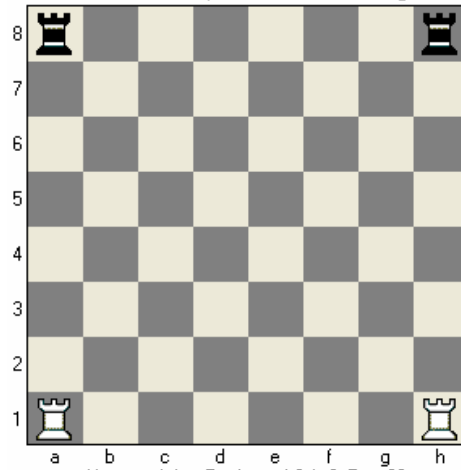
How much is a Knight worth? 1, 3, 5, or 9?

Which Black piece can the White Queen NOT take?

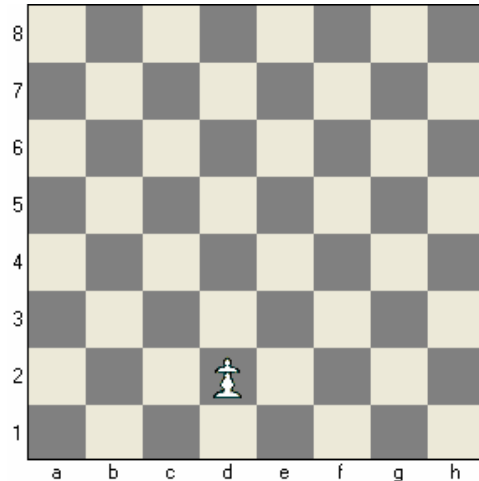


How much is a Queen worth? 1, 3, 5, or 9?

Does a Rook move up and down or on the diagonal?

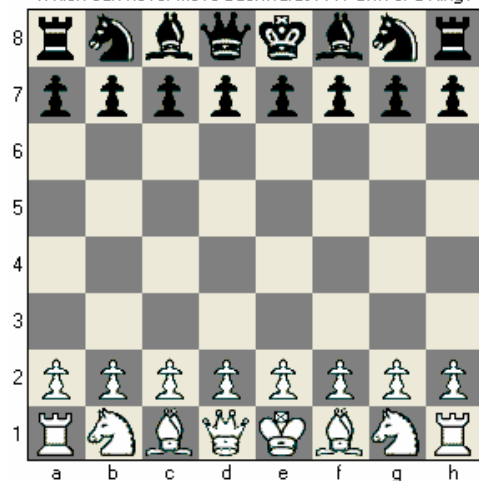


How much is a Rook worth? 1, 3, 5, or 9?



How much is a Pawn worth? 1, 3, 5, or 9?

Which can never move backwards? A Pawn or a King?



What is the only piece that may jump over other pieces?