

Name _____

Chess Notation: Level 3

Sometimes in chess, two of your pieces can move to the same square. If both pieces are Rooks, Knights, or pawns, you will need to specify which one is moving by writing down the **rank or file** where the piece started (in addition to the normal recording information). For example, if you have Rooks on a1 and f1 and both can move to c1, you would write either "Rac1" or "Rfc1" depending on which Rook moves.

Pawn promotions use the = sign. For example, "a8=Q" means a pawn moves to a8 to become a Queen. *En Passant* is abbreviated **e.p.** For example, "exd6 e.p." means that white just captured on d6 *en passant*. **Checkmate** is simply written ++.

Using the information above, answer the question below.

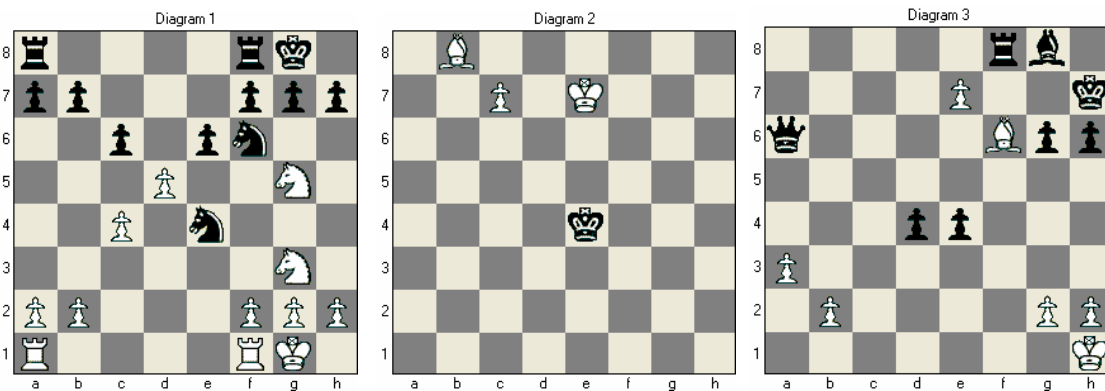


Diagram 1

It is White's turn to move. If you wish to move the Rook on f1 to d1, how do we write that? _____

What if you wanted to move the other Rook to d1, how would we write that? _____

What if White wanted to capture the Knight on e4 with your Knight on g5? Write it: _____

Instead, how would we write it if White wanted to capture on e4 with your g3-Knight? _____

It is Black's turn to move, and he decides to capture the Pawn on d5. What are the three ways he could capture that Pawn? Write them here: _____

Diagram 2

White decides to promote his pawn to a Rook. How do we write that? _____

What if White wanted to promote his Pawn to a Bishop? How do we write that? _____

Diagram 3

Find – and then write out – White's best move in the position above. _____