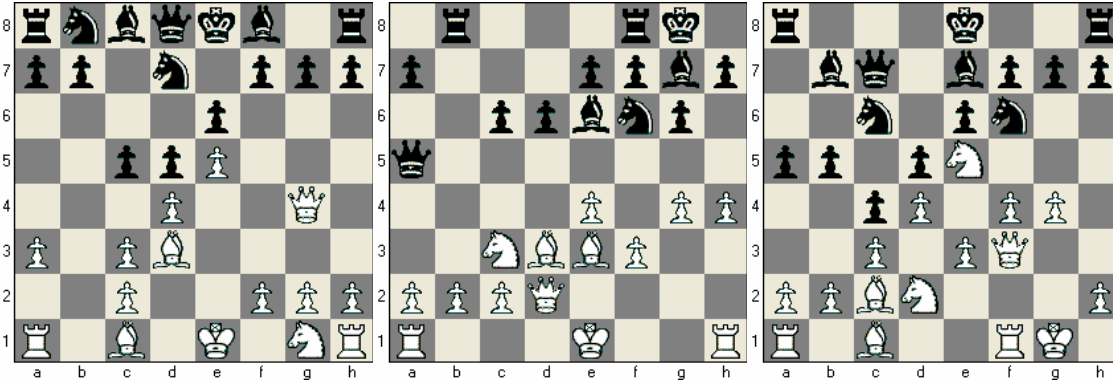


Name _____

“Castling Into It”

By now you should be aware that in most chess games, it pays to Castle: you get your King out of the center and into safety behind a wall of Pawns while at the same time activating on of your Rooks. There are times, however, when it is NOT a good idea to castle. If your opponent has been building up an attack on one side of the board, then “Castling Into It” – castling your King into an attack – will only result in disaster. Let’s take a look at some examples of when castling is a bad idea.



The first illustration comes from a variation of the French Defense. It is Black’s turn to move. White has brought out her Queen and her light-squared Bishop, and her dark-squared Bishop is also ready for action against Black’s King side.

If Black now plays **8. ...O-O?**, White can force a win of material. How should White respond if Black castles? (*Hint: White will Win the exchange by exploiting a pin on Black’s g-Pawn.*)

White’s move: _____

Diagram 2 features the Sicilian Defense – Dragon Variation.

White has decided to pursue an attack against Black’s King, but she has made the grievous error of forgetting to keep her own King safe!

Black has just played **12. ...Rab8** reinforcing his attack on White’s Queenside. White cannot very well play **13. O-O-O?** Because Black will simply capture the Pawn on b2, and in addition, White’s King still wouldn’t be safe because she has already advanced the Pawns on her Kingside.

But **13. O-O?** is even worse! How can Black win a Pawn and continue his attack on the Queen side if White plays this move?

Black’s move: _____

Our final example comes from a variation of the Colle System. From the position of each side’s Pawns, it is clear that Black is pursuing an attack on the _____ side, while White’s attack is on the _____ side.

Unfortunately for Black, he cannot safely castle on either side. If **12. ...O-O-O?** White can win the exchange with what move?

White’s move: _____

Even worse for Black, however, is **12. ...O-O?**, as White will overrun Black’s defense. Notice that White has four powerful pieces attacking Black’s King side.

Bonus: How can White break down Black’s defense after 12. ...O-O?

White’s move: _____
What is the main purpose of this move? _____